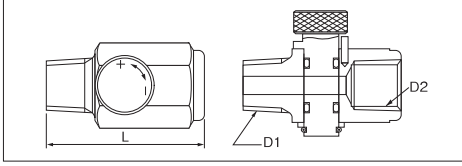


ACCESSORIES

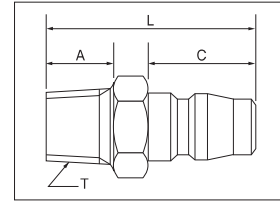
Air Regulator Assembly

Item	Dimensions			Part Number
	D1	D2	L (mm)	
Air Regulator Assembly 1/8	NPT1/8	NPT1/8	42	932-100-0
Air Regulator Assembly 1/4	NPT1/4	NPT1/4	42	932-110-0



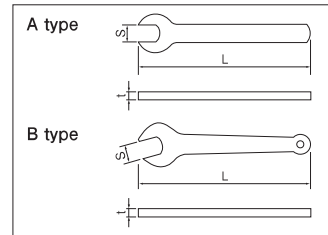
Lock Plug

Item	T	Dimensions			Part Number
		L (mm)	A (mm)	C (mm)	
Lock Plug NPT1/4	NPT1/4	43	14.7	20.3	933-042-0
Lock Plug NPT3/8	NPT3/8	45	16.7	20.3	933-043-0



Spanner

Item	Dimensions	Dimensions			Part Number	Used for
		S (mm)	L (mm)	t (mm)		
A	Spanner 8x2x90	8	90	2	936-100-0	UD-50S-22A
	Spanner 17x3.2x135	17	135	3.2	936-051-0	UG-65/650E
	Spanner 21	21	173	5	936-521-0	AG-50, AG-50L
	Spanner 29x4.76x150	29	150	4.76	936-054-0	USG-4S
	Spanner 32x4x150	32	150	4	936-072-0	AG-100S, AG-100SL
B	Spanner 12	12	125	4.5	936-512-0	UD-50S-22A
	Spanner 14	14	145	4.5	936-514-0	UG-25NA, UG-25NSA UG-38N, UG-38NA, UG-38NS, UG-38NSA UG-38NL, UG-38NSL, UG-50S-200A
	Spanner 17	17	159	4	936-517-0	UG-25NA, UG-25NSA UG-65/650E
	Spanner 23x5x195	23	195	5	936-053-0	USG-7S
	Spanner 26x5x195	26	195	5	936-004-0	UP-80-40

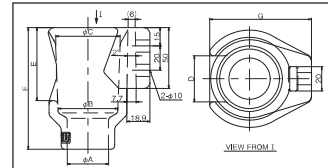


Motor Oil (200mL) 998-725-0

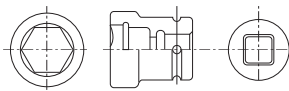


Tool Holders

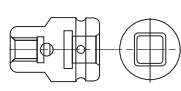
	Dimension (mm)							Part Number	Used for
	A	B	C	D	E	F	G		
Small	φ34	φ49	φ54	38	60	100	84	852-644-1	UAT30D-70 SERIES, UL30-70 SERIES, US-5PW, -6PW, UD-50-200, -45, -22, UD-60-29, -20, -15, UT-66B-15
Middle	φ36	φ54	φ68	38	66	115	106.5	852-669-1	UAT70-90 SERIES, UL70-90 SERIES, UA40MC-90MC, BP-T40-60 SERIES, UW-6SLRK, -6SBRK, -6SHBRK, -B6SLK, -ST6SHK SERIES
Large	φ50	φ74	φ78	42	80	125	115	852-645-1	UAT90-130 SERIES, UL90-130 SERIES, UA100MC, UX-ST800 SERIES, UW-6SRK, -6SHBRK, -8SHRK, -9SRK SERIES



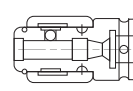
HEXAGONAL SOCKET*



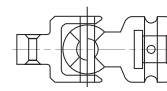
SOCKET FOR STUD-BOLT DRIVING*



BIT CHUCK ASSEMBLY*



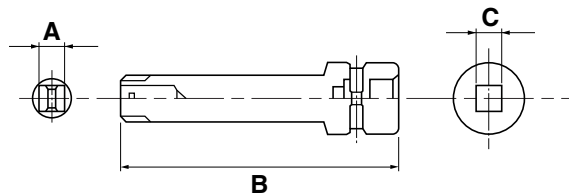
JOINT ASSEMBLY*



*Please contact your nearest URYU distributor for available sizes.

Extension Bars for Oil-Pulse Tools

Part Number	B (mm)	A&C Sq. Drive
904-049-0 904-050-0 904-051-0	75 100 150	9.5mm (3/8")
904-155-0 904-156-0 904-157-0	76 125 204	12.7mm (1/2") D=φ 15.875
904-168-0 904-169-0 904-172-0	76 125 204	12.7mm (1/2") D=φ 16



Following o-ring and pin are fitted with the extension bar.

Sq. Drive (mm)	O-ring		Pin	
	Part Number	Description	Part Number	Description
9.5	990-290-0	O-ring JW12	971-990-0	Pin 3 x 16.5
12.7	990-291-0	O-ring JW17	971-991-0	Pin 3.2 x 24

*12.7mm square drive with φ 15.875 is for UX-900S.
*Please contact your nearest URYU distributor for other available sizes.