

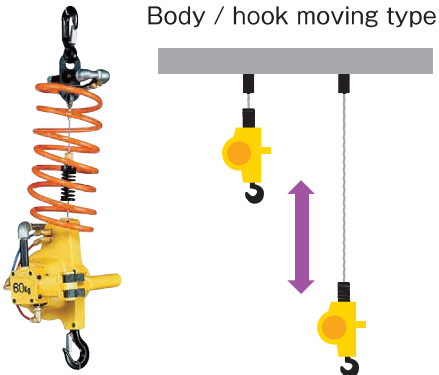


# WIRE ROPE TYPE

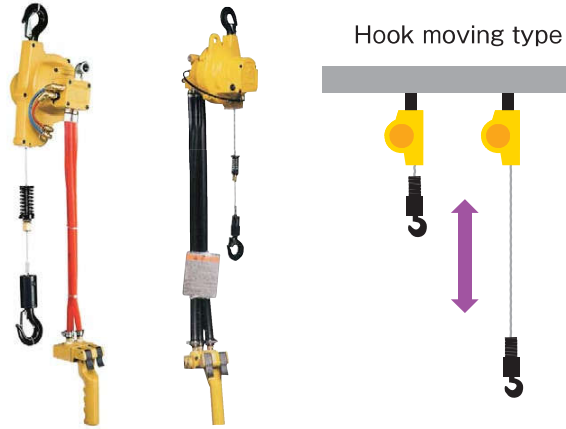
Wire rope series EHW / AH

## Type of hoisting

### EHW-60 , EHW-120



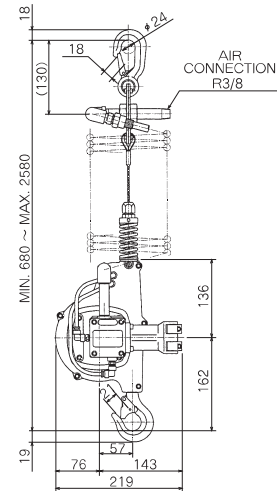
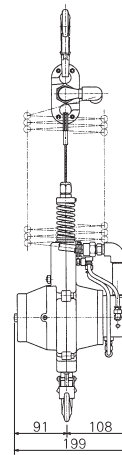
### EHW-60R , EHW-120R , AH-250R



### EHW-60 , EHW-120

#### FUNCTION

-  Wire rope type
-  Air motor trolley (on request)
-  Button control
-  Plain trolley (on request)



Model	Rated load (kg)	Stroke (m)	Air pressure MPa (kgf/cm <sup>2</sup> )	Lifting speed m/min	Air consumption m <sup>3</sup> /min (normal)	Air inlet	Mass (kg)
EHW-60	60	1.9	0.4 {4}	18.5	0.55	R 3/8	9.2
			0.5 {5}	22.5	0.7		
			0.6 {6}	26.0	0.88		
EHW-120	120	1.9	0.4 {4}	11.0	0.59	R 3/8	9.4
			0.5 {5}	13.5	0.75		
			0.6 {6}	16.0	0.93		

**Note**

1. Install a filter and lubricator to the hoist as close as possible.
2. Both of cable extension and stroke extension are not available on EHW series and AH-250R.
3. Chain hoists are recommended for the frequent operation.
4. Application; Indoor -10°C~+50°C(Temperature)

# 60/120/250kg

WIRE ROPE  
TYPE

## ENDO AIR HOIST EHW.AH SERIES

### EHW-60R , EHW-120R

#### FUNCTION



Wire rope  
type



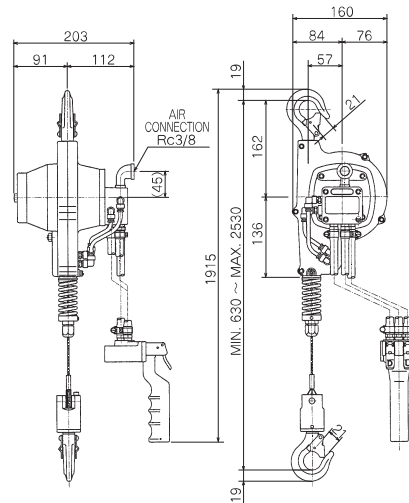
Air motor trolley  
(on request)



Button  
control



Plain trolley  
(on request)



\*Length of control hose is 1.5m.

Model	Rated load (kg)	Stroke (m)	Air pressure MPa [kgf/cm <sup>2</sup> ]	Lifting speed m/min	Air consumption m <sup>3</sup> /min (normal)	Air inlet	Mass (kg)
EHW-60R	60	1.9	0.4 {4}	18.5	0.55	Rc 3/8	9.5
			0.5 {5}	22.5	0.7		
			0.6 {6}	26.0	0.88		
EHW-120R	120	1.9	0.4 {4}	11.0	0.59	Rc 3/8	9.7
			0.5 {5}	13.5	0.75		
			0.6 {6}	16.0	0.93		

### AH-250R

#### FUNCTION



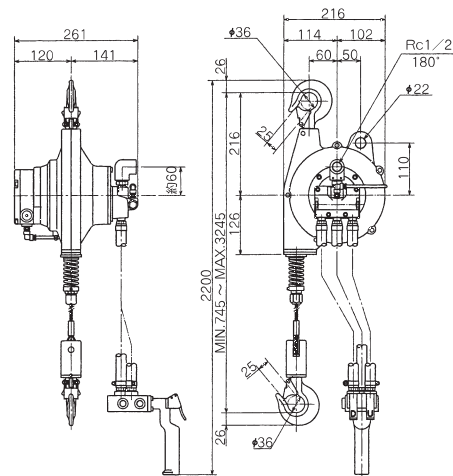
Wire rope  
type



Air motor trolley  
(on request)



Button  
control



\*Length of control hose is 1.7m.

Model	Rated load (kg)	Stroke (m)	Air pressure MPa [kgf/cm <sup>2</sup> ]	Lifting speed m/min	Air consumption m <sup>3</sup> /min (normal)	Air inlet	Mass (kg)
AH-250R	160	2.5	0.4 {4}	9.0	0.75	Rc 1/2	18.2
	200		0.5 {5}	10.0	0.92		
	250		0.6 {6}	11.0	1.1		

#### Note

1. Install a filter and lubricator to the hoist as close as possible.
2. Both of cable extension and stroke extension are not available on EHW series and AH-250R.
3. Chain hoists are recommended for the frequent operation.
4. Application; Indoor -10°C~+50°C(Temperature)