

Air Ratchet Wrench

氣動棘輪扳手



OP-RW1016
Rear exhaust
後排氣



OP-RW10172 1/4"
OP-RW10173 3/8"
Rear exhaust
後排氣



OP-RW11473 3/8"
OP-RW11474 1/2"
Rear exhaust
後排氣



OP-RW10223 3/8"
OP-RW10224 1/2"
Rear exhaust
後排氣



OP-121 1/2"
Front exhaust
前排氣

SPECIFICATION (air pressure at 90psi、6.2bar、6.3kg/cm²)

MODEL 型號	Hex Size 六角尺寸 mm	Bolt Size Capacity 螺栓規格 mm	Working Torque 工作扭力		MAX. Torque 最大扭力		Free Speed 無負荷轉速 rpm	Air Consumption 耗氣量		Overall Length 全長		Air Inlet 入氣接頭 P.T	Net Weight 重量		Sound Level 噪音值 dB(A)
			Nm	ft-lb	Nm	ft-lb		l/min	cfm	mm	inch		kg	lb	
OP-RW1016	8,10,12,13,14		10	7	41	30	450	141	5	188	7.4	1/4	0.55	1.21	77
OP-RW10172		M6	10	7	34	25	250	141	5	181	7.13	1/4	0.55	1.21	85
OP-RW10173		M6	10	7	34	25	250	141	5	181	7.13	1/4	0.55	1.21	85
OP-RW11473		M10	80	59	100	74	140	310	11	275	10.82	1/4	1.45	3.19	85
OP-RW11474		M10	80	59	100	74	140	310	11	275	10.82	1/4	1.45	3.19	85
OP-RW10223		M10	50	37	95	70	180	170	6	266	10.47	1/4	1.2	2.65	85
OP-RW10224		M10	50	37	95	70	180	170	6	266	10.47	1/4	1.2	2.65	85
OP-121		M10	43	32	100	74	150	339	12	360	14.17	1/4	2.06	4.54	92

Air Ratchet Wrench

氣動棘輪扳手

- The ratchet wrench can be used in narrow working spaces and can fasten bolts and nuts easily. This special tool can be reached tight place that other air tools can not.
- Remove: First, loosen nut by wrench then take nut out with air ratchet.
- Fasten: Push trigger to position the nut then lock it with torque wrench.

- 棘輪扳手主要功能，是解決其他氣動工具，無法深入極小空間裡、鎖緊螺絲或螺帽之特殊工具。
- 拆卸：應先以扳手鬆開螺帽後，再觸壓板機。
- 上緊：觸壓板機將螺帽定位後，再以扭力扳手上緊。



OP-812LS
Rear exhaust
後排氣



OP-814LS
Rear exhaust
後排氣



OP-814LSB
Rear exhaust
後排氣



OP-819LS
Rear exhaust
後排氣



OP-827LS
Rear exhaust
後排氣



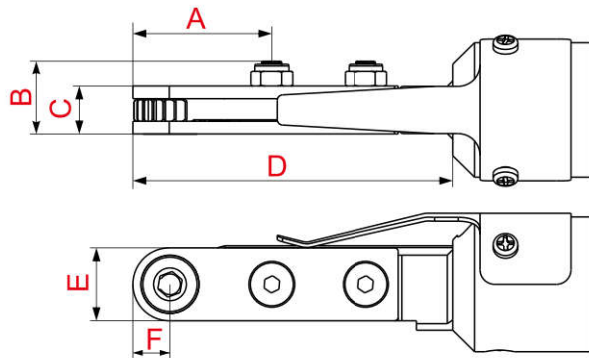
OP-832LS
Rear exhaust
後排氣



OP-836LS
Rear exhaust
後排氣

SPECIFICATION (air pressure at 90psi、6.2bar、6.3kg/cm²)

MODEL 型號	Hex Size 六角尺寸 mm	Working Torque 工作扭力		MAX. Torque 最大扭力		Free Speed 無負荷轉速 rpm	Air Consumption 耗氣量		Overall Length 全長		Air Inlet 入氣接頭 P.T	Net Weight 重量		Sound Level 噪音值 dB(A)
		Nm	ft-lb	Nm	ft-lb		l/min	cfm	mm	inch		kg	lb	
OP-812LS	6, 7, 8, 9, 10, 11, 12, (1/4", 3/8")	10	7	10	7	180	127	4.5	285	11.22	1/4	1.28	2.82	86
OP-814LS	10, 11, 12, 13, 14, (1/2", 9/16")	15	11	25	18	220	212	7.5	332	13.07	1/4	1.92	4.23	87
OP-814LSB	10, 11, 12, 13, 14, 15, 16, 17, 18, 19 (11/16")	15	11	25	18	190	212	7.5	338	13.3	1/4	2	4.4	87
OP-819LS	10, 11, 12, 13, 14, 15, 16, 17, 18, 19 (11/16")	80	59	90	66	150	353	12.5	390	15.35	1/4	2.42	5.33	92
OP-827LS	21, 22, 23, 24, 26, 27	80	59	90	66	130	353	12.5	398	15.66	1/4	2.48	5.46	92
OP-832LS	29, 30, 32	80	59	90	66	110	353	12.5	405	15.94	1/4	2.5	5.51	92
OP-836LS	35, 36	80	59	90	66	100	353	12.5	408	16.06	1/4	2.52	5.55	92



MODEL 型號	A mm	B mm	C mm	D mm	E mm	F mm
OP-812LS	38.2	20	13.2	88.2	20	10.2
OP-814LS	44.4	26	18	109	25.2	12.2
OP-814LSB	51	26	18	115	33.2	16.6
OP-819LS	51	26	18	115	33.2	16.6
OP-827LS	59	26	18	123	41	20.5
OP-832LS	66	26	18	130	48	24
OP-836LS	70	26	18	134	52	26

Air Ratchet Wrench Order Code Reference

Model 型號	OP-812LS	OP-814LS	OP-814LSB	OP-819LS	OP-827LS	OP-832LS	OP-836LS
Hex Size 六角尺寸	Order Code 訂貨號						
6mm	OP-812LS-6						
7mm	OP-812LS-7						
8mm	OP-812LS-8						
9mm	OP-812LS-9						
10mm	OP-812LS-10	OP-814LS-10	OP-814LSB-10	OP-819LS-10			
11mm	OP-812LS-11	OP-814LS-11	OP-814LSB-11	OP-819LS-11			
12mm	OP-812LS-12	OP-814LS-12	OP-814LSB-12	OP-819LS-12			
13mm		OP-814LS-13	OP-814LSB-13	OP-819LS-13			
14mm		OP-814LS-14	OP-814LSB-14	OP-819LS-14			
15mm			OP-814LSB-15	OP-819LS-15			
16mm			OP-814LSB-16	OP-819LS-16			
17mm			OP-814LSB-17	OP-819LS-17			
18mm			OP-814LSB-18	OP-819LS-18			
19mm			OP-814LSB-19	OP-819LS-19			
21mm					OP-827LS-21		
22mm					OP-827LS-22		
23mm					OP-827LS-23		
24mm					OP-827LS-24		
26mm					OP-827LS-26		
27mm					OP-827LS-27		
29mm						OP-832LS-29	
30mm						OP-832LS-30	
32mm						OP-832LS-32	
35mm							OP-836LS-35
36mm							OP-836LS-36
1/4"	OP-812LS-1/4"						
3/8"	OP-812LS-3/8"						
1/2"		OP-814LS-1/2"		OP-819LS-1/2"			
9/16"		OP-814LS-9/16"		OP-819LS-9/16"			
11/16"			OP-814LSB-11/16"	OP-819LS-11/16"			
1 - 1/8"						OP-832LS-1-1/8"	

Equal specifications: 5/16" <=> 8mm, 5/8" <=> 16mm, 3/4" <=> 19mm, 1-1/16" <=> 27mm, 1-3/8" <=> 35mm
相等規格

AIR RATCHET WRENCH



OP-812LR

Rear exhaust
後排氣



OP-814LR

Rear exhaust
後排氣



MODEL 型號	A mm	B mm	C mm	D mm	E mm	F mm
OP-812LR	38.2	20	13.2	83.9	20	10.2
OP-814LR	44.4	26	18	105	25.2	12.2
OP-814LRB	51	26	18	111.5	33.2	16.6

Air Ratchet Wrench Order Code Reference

Model 型號	OP-812LR	OP-814LR	OP-814LRB
Hex Size 六角尺寸	Order Code 訂貨號		
6mm	OP-812LR-6		
7mm	OP-812LR-7		
8mm	OP-812LR-8		
9mm	OP-812LR-9		
10mm	OP-812LR-10	OP-814LR-10	OP-814LRB-10
11mm	OP-812LR-11	OP-814LR-11	OP-814LRB-11
12mm	OP-812LR-12	OP-814LR-12	OP-814LRB-12
13mm		OP-814LR-13	OP-814LRB-13
14mm		OP-814LR-14	OP-814LRB-14
15mm			OP-814LRB-15
16mm			OP-814LRB-16
17mm			OP-814LRB-17
18mm			OP-814LRB-18
19mm			OP-814LRB-19
1/4"	OP-812LR-1/4"		
3/8"	OP-812LR-3/8"		
1/2"		OP-814LR-1/2"	
9/16"		OP-814LR-9/16"	
11/16"			OP-814LRB-11/16"
Equal specifications: 5/16" <=> 8mm, 5/8" <=> 16mm, 相等規格 3/4" <=> 19mm			

SPECIFICATION (air pressure at 90psi · 6.2bar · 6.3kg/cm²)

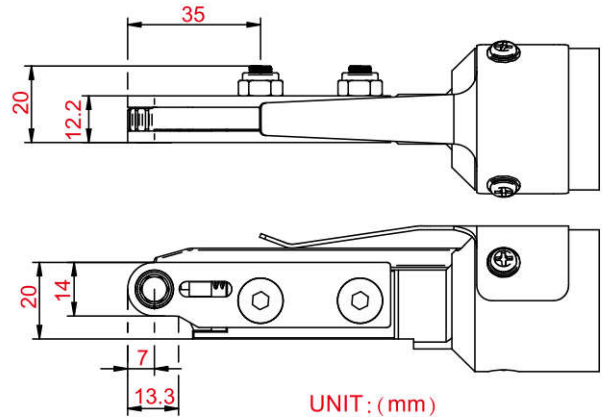
MODEL 型號	Hex Size 六角尺寸 mm	Working Torque 工作扭力		MAX. Torque 最大扭力		Free Speed 無負荷轉速 rpm	Air Consumption 耗氣量		Overall Length 全長		Air Inlet 入氣接頭 P.T	Net Weight 重量		Sound Level 噪音值 dB(A)
		Nm	ft-lb	Nm	ft-lb		l/min	cfm	mm	inch		kg	lb	
OP-812LR	6, 7, 8, 9, 10, 11, 12 (1/4", 3/8")	10	7	10	7	180	127	4.5	281	11.06	1/4	1.28	2.82	86
OP-814LR	10, 11, 12, 13, 14, (1/2", 9/16")	15	11	25	18	220	212	7.5	327	12.88	1/4	1.92	4.23	87
OP-814LRB	10, 11, 12, 13, 14, 15, 16, 17, 18, 19 (11/16")	15	11	25	18	190	212	7.5	333	13.11	1/4	2	4.4	87

Mini Air Ratchet Wrench

迷你氣動棘輪扳手

Air Ratchet Wrench Order Code Reference

Model 型號	OP-806LS
Hex Size 六角尺寸	Order Code 訂貨號
6mm	OP-806LS-6
1/4"	OP-806LS-1/4"



OP-806LS
Rear exhaust
後排氣

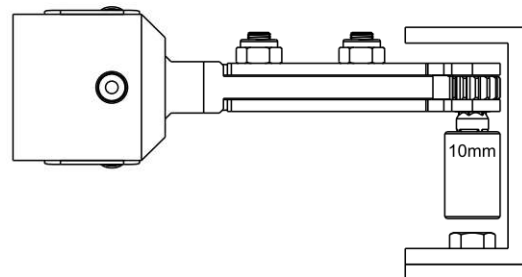
SPECIFICATION (air pressure at 90psi、6.2bar、6.3kg/cm²)

MODEL 型號	Hex Size 六角尺寸	Working Torque 工作扭力		MAX. Torque 最大扭力		Free Speed 無負荷轉速	Air Consumption 耗氣量		Overall Length 全長		Air Inlet 入氣接頭	Net Weight 重量		Sound Level 噪音值
		Nm	ft-lb	Nm	ft-lb		rpm	l/min	cfm	mm		inch	P.T	
OP-806LS	6, 1/4"	10	7	10	7	250	127	4.5	282	11.1	1/4	1.26	2.77	86

Exclusive Bit

專用起子頭

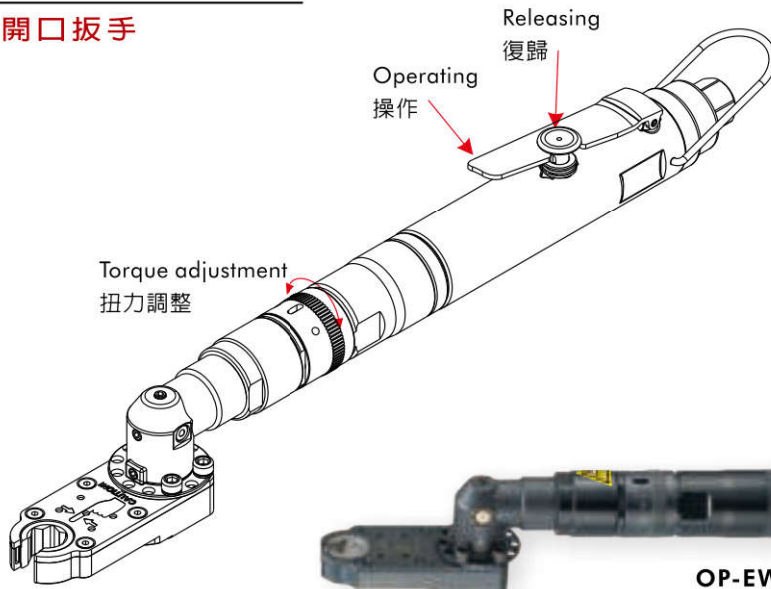
- Used with OP-806LS-1/4" can be used with multi-size thin socket.
- 搭配 OP-806LS-1/4" 使用，可裝配多種尺寸薄型套筒使用。



MODEL 型號	□ Type 樣式	⬡ Type 樣式	Length 長度	g 克	Packing 入數
96A2025	1/4"	1/4"	25mm	10	10PCS

Air Open-end Wrench

氣動開口扳手



OP-EW17
Air shut off 自動斷氣
Rear exhaust 後排氣



OP-EW24
Air shut off 自動斷氣
Rear exhaust 後排氣



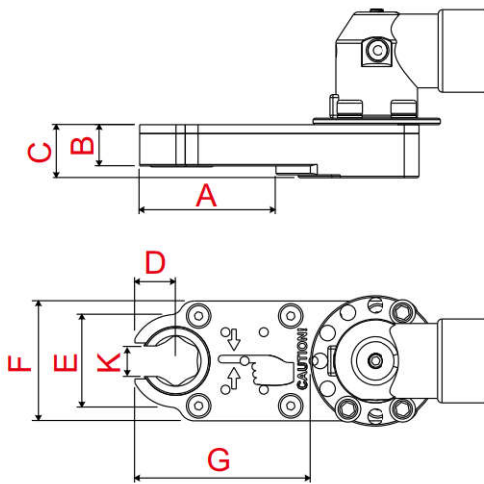
OP-EW32
Air shut off 自動斷氣
Rear exhaust 後排氣



OP-EW55
Air shut off 自動斷氣
Rear exhaust 後排氣

SPECIFICATION (air pressure at 90psi、6.2bar、6.3kg/cm²)

MODEL 型號	Hex Size 六角尺寸	MAX. Torque 最大扭力	Free Speed 無負荷轉速	Air Consumption 耗氣量		Overall Length 全長		Air Inlet 入氣接頭	Net Weight 重量		Sound Level 噪音值
	mm			Nm	rpm	l/min	cfm	mm	inch	P.T	
OP-EW17	7, 8, 9, 10, 11, 12, 13, 14, 15, 16, 17	7.5~15	230	198	7	413	16.25	1/4	1.67	3.68	87
OP-EW24	17, 18, 19, 20, 21, 22, 23, 24, 11/16"	10~20	150	198	7	438	17.24	1/4	1.84	4.05	87
OP-EW32	24, 26, 27, 29, 30, 32	12~24	115	198	7	461	18.14	1/4	2.09	4.6	87
OP-EW55	36, 38, 40, 41, 46, 50, 55	14~28	100	198	7	504	19.84	1/4	2.52	5.55	87



MODEL 型號	A	B	C	D	E	F	G
	mm	mm	mm	mm	mm	mm	mm
OP-EW17	46.2	14	18	13.6	31	40	58.8
OP-EW24	57.2	14	18	20.6	46.6	48	83.2
OP-EW32	71	14	18	26.6	59	59	106.6
OP-EW55	92.1	14	18	39.3	86	86	149.3

Air Open-end Wrench Order Code Reference

Model 型號	OP-EW17	OP-EW24	OP-EW32	OP-EW55
Order Code 訂貨號				
Hex Size 六角尺寸	Insert Type 插入型			K
7mm	OP-EW17-SR7			7.1
8mm	OP-EW17-SR8			8.1
9mm	OP-EW17-SR9			9.1
10mm	OP-EW17-SR10			10.1
11mm	OP-EW17-SR11			11.1
12mm		OP-EW24-SR12		12.1
13mm		OP-EW24-SR13		13.1
14mm		OP-EW24-SR14		14.1
15mm		OP-EW24-SR15		15.1
16mm		OP-EW24-SR16		16.1
17mm			OP-EW32-SR17	17.1
18mm			OP-EW32-SR18	18.1
19mm			OP-EW32-SR19	19.1
20mm			OP-EW32-SR20	20.1
21mm			OP-EW32-SR21	21.1
22mm			OP-EW32-SR22	22.1
36mm				OP-EW55-SR36
9/16"		OP-EW24-SR9/16"		14.4
11/16"			OP-EW32-SR11/16"	17.6
13/16"			OP-EW32-SR13/16"	20.75

Air Open-end Wrench Order Code Reference

Model 型號	OP-EW17	OP-EW24	OP-EW32	OP-EW55
Order Code 訂貨號				
Hex Size 六角尺寸	Standard Type 標準型			K
7mm	OP-EW17-7			5
8mm	OP-EW17-8			5.6
9mm	OP-EW17-9			6.5
10mm	OP-EW17-10			7
11mm	OP-EW17-11			8.1
12mm	OP-EW17-12			8.5
13mm	OP-EW17-13			9
14mm	OP-EW17-14			10.2
15mm	OP-EW17-15			10.5
16mm	OP-EW17-16			10.9
17mm	OP-EW17-17	OP-EW24-17		11.3
18mm		OP-EW24-18		12
19mm		OP-EW24-19		13.1
20mm		OP-EW24-20		13.5
21mm		OP-EW24-21		15
22mm		OP-EW24-22		15.2
23mm		OP-EW24-23		15.5
24mm		OP-EW24-24	OP-EW32-24	16.1
26mm			OP-EW32-26	17.1
27mm			OP-EW32-27	18.1
29mm			OP-EW32-29	19.2
30mm			OP-EW32-30	20.1
32mm			OP-EW32-32	21.2
36mm				OP-EW55-36
38mm				OP-EW55-38
40mm				OP-EW55-40
41mm				OP-EW55-41
46mm				OP-EW55-46
50mm				OP-EW55-50
55mm				OP-EW55-55
11/16"		OP-EW24-11/16"		11.5

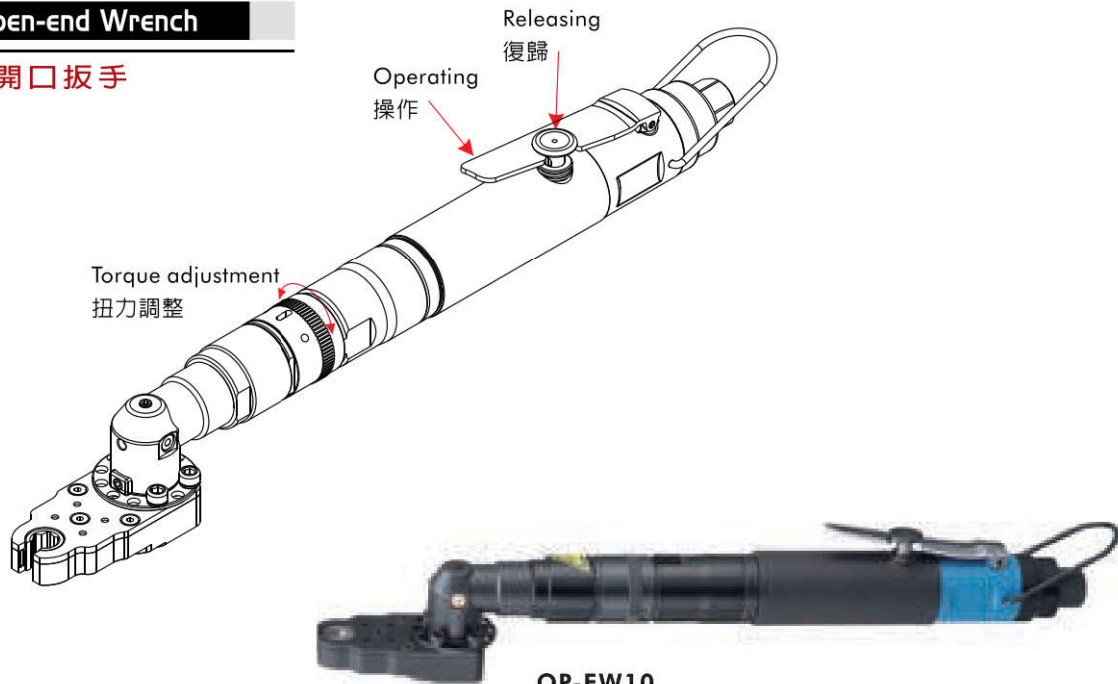
Air Open-end Wrench Order Code Reference

Model 型號	OP-EW17	OP-EW24	OP-EW32
Order Code 訂貨號			
Hex Size 六角尺寸	Blind Type 擋口型		L
8mm	OP-EW17-BD8		5.6
10mm	OP-EW17-BD10		7
11mm	OP-EW17-BD11		8.1
12mm	OP-EW17-BD12		8.5
13mm	OP-EW17-BD13		9
14mm	OP-EW17-BD14		10.2
15mm	OP-EW17-BD15		10.5
16mm	OP-EW17-BD16		10.9
17mm	OP-EW17-BD17	OP-EW24-BD17	11.3
18mm		OP-EW24-BD18	12
19mm		OP-EW24-BD19	13.1
20mm		OP-EW24-BD20	13.5
21mm		OP-EW24-BD21	15
22mm		OP-EW24-BD22	15.2
23mm		OP-EW24-BD23	15.5
24mm		OP-EW24-BD24	16.1
26mm			OP-EW32-BD26
27mm			OP-EW32-BD27
29mm			OP-EW32-BD29
30mm			OP-EW32-BD30
32mm			OP-EW32-BD32

Equal specifications: 5/16" <=> 8mm, 5/8" <=> 16mm,
 相等規格: 3/4" <=> 19mm, 1-1/16" <=> 27mm,
 1-3/8" <=> 35mm, 1-1/2" <=> 38mm

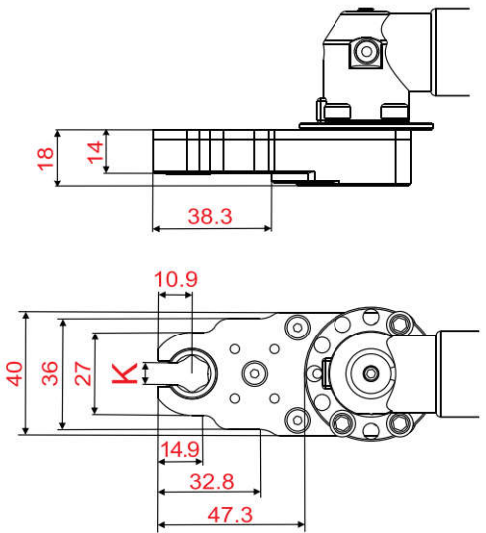
Air Open-end Wrench

氣動開口扳手





OP-EW10

Air shut off 自動斷氣
Rear exhaust 後排氣



UNIT: (mm)

Air Open-end Wrench Order Code Reference

Model 型號	OP-EW10				
Order Code 訂貨號					
Hex Size 六角尺寸	Blind Type 擋口型			K	L
8mm			L	5.6	5
10mm			L	7	6.5

Air Open-end Wrench Order Code Reference

Model 型號	OP-EW10		
Order Code 訂貨號			
Hex Size 六角尺寸	Standard Type 標準型		K
6mm			4.2
8mm			5.6
10mm			7
1/4"			4.4

Equal specifications: 5/16" <=> 8mm
相等規格 :

SPECIFICATION (air pressure at 90psi \ 6.2bar \ 6.3kg/cm²)

MODEL 型號	Hex Size 六角尺寸	MAX. Torque 最大扭力	Free Speed 無負荷轉速	Air Consumption 耗氣量		Overall Length 全長		Air Inlet 入氣接頭	Net Weight 重量		Sound Lever 噪音值
	mm	Nm	rpm	l/min	cfm	mm	inch	P.T	kg	lb	dB(A)
OP-EW10	6,8,10,1/4"	6~12	300	198	7	402	15.82	1/4	1.65	3.63	87