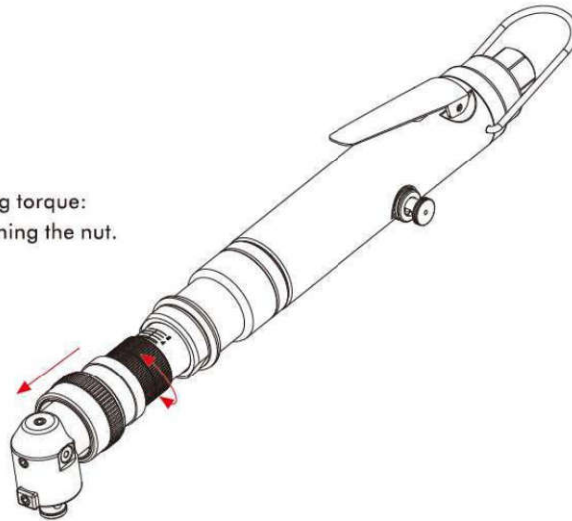




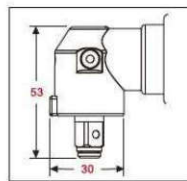
**Air Wrench Torque Control Type**

氣動扳手: 扭力控制式

The method of adjusting torque:  
Adjusting torque by turning the nut.  
扭力調整方式:  
調整螺帽距離



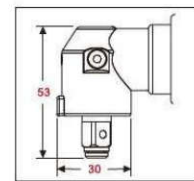
**OP-5SLB08** 3/8"  
**OP-5SLB15** 3/8"  
Air shut off  
Rear exhaust  
後排氣



UNIT : (mm)



**OP-5SLB03** 3/8"  
Air shut off  
Rear exhaust  
後排氣



UNIT : (mm)

**SPECIFICATION (air pressure at 90psi、6.2bar、6.3kg/cm<sup>2</sup>)**

MODEL 型號	Bolt Size Capacity 螺栓規格	MAX. Torque 最大扭矩	Free Speed 無負荷轉速	Air Consumption 耗氣量		Overall Length 全長		Air Inlet 入氣接頭	Net Weight 重量		Sound Level 噪音值
	mm	Nm	rpm	l/min	cfm	mm	inch	P.T	kg	lb	dB(A)
OP-5SLB15	M4	1.2~2.4	1450	198	7	340	13.39	1/4	1.22	2.69	80
OP-5SLB08	M5	2.2~4.3	800	198	7	340	13.39	1/4	1.22	2.69	80
OP-5SLB03	M6	4~10	340	198	7	350	13.77	1/4	1.3	2.86	80



**Air Wrench Two Hammer Type**

**氣動扳手:雙錘式**

- High impact frequency.
- Low counteraction.

**APPLICATION :**

- Apply to release or fasten small bolts especially in heavy-productive assembly lines such as motor-vehicles, bicycles, and motor.

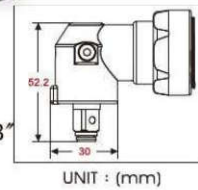
- 衝擊頻率高
- 反作用力小

**用途 :**

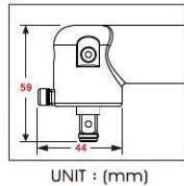
- 小型螺帽攻拆專用如汽機車、自行車、馬達等高精度產量裝配維修廠



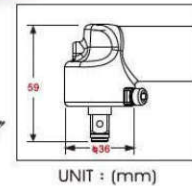
**OP-301LB90 3/8"**  
Rear exhaust  
後排氣



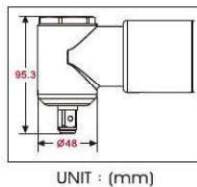
**OP-311LH3 3/8"**  
Rear exhaust  
後排氣



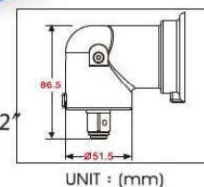
**OP-310LH3 3/8"**  
Side exhaust  
側排氣



**OP-100LH 1/2"**  
Rear exhaust  
後排氣



**OP-130LH4 1/2"**  
Side exhaust  
側排氣



**SPECIFICATION(air pressure at 90psi 、6.2bar 、6.3kg/cm<sup>2</sup>)**

MODEL 型號	Bolt Size Capacity 螺栓規格	Working Torque 工作扭力		MAX. Torque 最大扭力		Free Speed 無負荷轉速	Air Consumption 耗氣量		Overall Length 全長		Air Inlet 入氣接頭	Net Weight 重量		Sound Level 噪音值
		Nm	ft-lb	Nm	ft-lb		rpm	l/min	cfm	mm		inch	P.T	
OP-301LB90	M6	17	13	40	30	9000	141	5	240	9.45	1/4	1.22	2.69	83
OP-311LH3	M10	50	37	90	66	8500	240	8.5	265	10.43	1/4	1.58	3.48	90
OP-310LH3	M10	60	44	130	96	7000	198	7	240	9.45	1/4	1.62	3.57	92
OP-100LH	M12	110	81	200	148	3000	240	8.5	300	11.81	1/4	2.63	5.79	87
OP-130LH4	M14~M16	220	162	270	200	4000	283	10	375	14.76	1/4	5	11.02	96



## Air Wrench Two Hammer Type

氣動扳手:雙錘式



**OP-301B2** 1/4"  
**OP-301B3** 3/8"  
Side exhaust  
側排氣



**OP-306B** 3/8"  
Rear exhaust  
後排氣



**OP-809B1** 3/8"  
Rear exhaust with muffler  
後排氣低噪音



**OP-310B3** 3/8"  
Side exhaust  
側排氣



**OP-328B3** 3/8"  
360° Rotate side exhaust  
360°調整側排氣



**OP-100B** 1/2"  
Rear exhaust  
後排氣



**OP-130B** 1/2"  
Side exhaust  
側排氣

### SPECIFICATION(air pressure at 90psi、6.2bar、6.3kg/cm<sup>2</sup>)

MODEL 型號	Bolt Size Capacity 螺絲規格	Working Torque 工作扭力		MAX. Torque 最大扭力		Free Speed 無負荷轉速	Air Consumption 耗氣量		Overall Length 全長		Air Inlet 入氣接頭	Net Weight 重量		Sound Level 噪音值
		Nm	ft-lb	Nm	ft-lb		rpm	l/min	cfm	mm		inch	P.T	
OP-301B	M8	27	20	35	26	11000	127	4.5	178	7.01	1/4	0.68	1.5	89
OP-306B	M10	80	59	200	148	8000	212	7.5	225	8.86	1/4	1.07	2.36	90
OP-809B1	M10	80	59	130	96	8000	184	6.5	230	9.06	1/4	1.2	2.65	80
OP-310B3	M10~M12	90	66	240	177	8000	254	9	190	7.48	1/4	1.06	2.34	97
OP-328B3	M10~M12	100	73	240	177	8800	268	9.5	198	7.79	1/4	1.05	2.31	98
OP-100B	M12~M14	160	118	280	207	5500	240	8.5	260	10.24	1/4	1.7	3.75	85
OP-130B	M16~M18	320	236	500	369	4400	283	10	330	13	1/4	3.4	7.5	95



**Air Wrench Two Hammer Type**

氣動扳手:雙鎚式



**OP-301LB2** 1/4"  
**OP-301LB3** 3/8"  
Handle exhaust  
下排氣



**OP-403LB2** 1/4"  
**OP-403LB3** 3/8"  
Handle exhaust  
下排氣



**OP-306SL1** 3/8"  
Side exhaust  
側排氣



**OP-406LB** 3/8"  
Handle exhaust  
下排氣



**OP-310LB3** 3/8"  
Side exhaust  
側排氣



**OP-100LB** 1/2"  
Side exhaust  
側排氣



**OP-131LB** 1/2"  
Side exhaust  
側排氣

**SPECIFICATION(air pressure at 90psi、6.2bar、6.3kg/cm<sup>2</sup>)**

MODEL 型號	Bolt Size Capacity 螺栓規格	Working Torque 工作扭力		MAX. Torque 最大扭力		Free Speed 無負荷轉速	Air Consumption 耗氣量		Overall Length 全長		Air Inlet 入氣接頭	Net Weight 重量		Sound Level 噪音值
		Nm	ft-lb	Nm	ft-lb		rpm	l/min	cfm	mm		inch	P.T	
OP-301LB	M8	27	20	35	26	13000	198	7	145	5.71	1/4	0.9	1.98	88
OP-403LB	M8	27	20	30	22	11500	170	6	155	6.1	1/4	0.9	1.98	87
OP-306SL1	M10	80	59	200	148	8000	226	8	183	7.2	1/4	1.2	2.65	94
OP-406LB	M12	100	74	190	140	8000	283	10	160	6.3	1/4	1.2	2.65	87
OP-310LB3	M12	110	81	240	177	8000	283	10	185	7.28	1/4	1.34	2.89	93
OP-100LB	M16	270	199	440	325	5000	240	8.5	180	7.09	1/4	2.3	5.07	92
OP-131LB	M18	360	266	580	428	4300	283	10	210	8.27	1/4	3.1	6.83	96



## Air Wrench Single Ring Type

氣動扳手:單環式



**OP-308DW 1/2"**  
**OP-308D 3/8"**  
Rear exhaust  
後排氣



**OP-310DB3 3/8"**  
**OP-310DB4 1/2"**  
Side exhaust  
側排氣



**OP-330D3 3/8"**  
**OP-330D4 1/2"**  
360° Rotate side exhaust  
360°調整側排氣



**OP-310LD3 3/8"**  
**OP-310LD4 1/2"**  
Side exhaust  
側排氣



**OP-409W 3/8"**  
**OP-409WHA 1/2"**  
Handle exhaust  
下排氣



**OP-601DB 3/8"**  
**OP-601D 1/2"**  
Side exhaust  
側排氣



**OP-605D4 1/2"**  
Handle exhaust  
下排氣

### SPECIFICATION (air pressure at 90psi、6.2bar、6.3kg/cm<sup>2</sup>)

MODEL 型號	Bolt Size Capacity 螺栓規格	Working Torque 工作扭力	MAX. Torque 最大扭力	Free Speed 無負荷轉速	Air Consumption 耗氣量	Overall Length 全長	Air Inlet 入氣接頭	Net Weight 重量	Sound Level 噪音值
	mm	Nm ft-lb	Nm ft-lb	rpm	l/min cfm	mm inch	P.T	kg lb	dB(A)
OP-308DW	M12	120 86	230 170	8100	240 8.5	220 8.66	1/4	1.32 2.91	85
OP-308D	M12	120 86	230 170	8100	240 8.5	220 8.66	1/4	1.32 2.91	85
OP-310DB3	M12	120 86	300 221	8000	254 9	200 7.87	1/4	1.18 2.6	96
OP-310DB4	M12	120 86	300 221	8000	254 9	200 7.87	1/4	1.18 2.6	96
OP-330D3	M12	140 103	300 221	8800	268 9.5	200 7.87	1/4	1.2 2.65	98
OP-330D4	M12	140 103	300 221	8800	268 9.5	200 7.87	1/4	1.2 2.65	98
OP-310LD3	M12	120 86	270 200	8000	254 9	185 7.28	1/4	1.5 3.3	96
OP-310LD4	M12	120 86	270 200	8000	254 9	185 7.28	1/4	1.5 3.3	96
OP-409W	M12	120 86	270 200	8500	254 9	155 6.1	1/4	1.32 2.91	88
OP-409WHA	M12	120 86	270 200	8500	254 9	155 6.1	1/4	1.32 2.91	88
OP-601DB	M12	120 86	270 200	8500	240 8.5	155 6.1	1/4	1.54 3.4	94
OP-601D	M12	120 86	270 200	8500	240 8.5	155 6.1	1/4	1.54 3.4	94
OP-605D4	M12	120 86	300 221	9500	240 8.5	155 6.1	1/4	1.42 3.13	82



## Air Wrench Twin Ring Type

氣動扳手:雙環式



**OP-906D4 1/2"**  
Handle exhaust  
下排氣



**OP-606D4 1/2"**  
Handle exhaust  
下排氣



**OP-603D 1/2"**  
Side exhaust  
側排氣



**OP-908D 1/2"**  
Handle exhaust  
下排氣



**OP-909D 1/2"**  
Composite handle  
Handle exhaust  
複合材料把手  
下排氣



**OP-936D2 3/4"**  
Handle exhaust  
下排氣



**OP-936D4 3/4"**  
Handle exhaust  
下排氣



**OP-915D 3/4"**  
**OP-915DA 1"**  
Composite handle  
Handle exhaust  
複合材料把手  
下排氣

### SPECIFICATION(air pressure at 90psi、6.2bar、6.3kg/cm<sup>2</sup>)

MODEL 型號	Bolt Size Capacity 螺栓規格	Working Torque 工作扭力		MAX. Torque 最大扭力		Free Speed 無負荷轉速	Air Consumption 耗氣量		Overall Length 全長		Air Inlet 入氣接頭	Net Weight 重量		Sound Level 噪音值
		Nm	ft-lb	Nm	ft-lb		rpm	l/min	cfm	mm		inch	P.T	
OP-906D4	M16	270	200	450	332	10000	311	11	140	5.51	1/4	1.6	3.52	92
OP-606D4	M16	300	221	480	354	9000	296	10.5	136	5.35	1/4	1.47	3.24	98
OP-603D	M18~M20	450	332	560	413	6000	325	11.5	180	7.09	1/4	2.57	5.67	95
OP-908D	M18~M20	450	332	600	443	6700	297	10.5	190	7.48	1/4	2.68	5.91	96
OP-909D	M18~M20	450	332	550	406	7300	311	11	210	8.27	1/4	2.15	4.74	90
OP-936D2	M22	820	604	950	700	5400	424	15	223	8.78	1/4	4.1	9.04	93
OP-936D4	M22	820	604	950	700	5400	424	15	268	10.55	1/4	4.25	9.37	93
OP-915D	M24~M27	1300	958	2000	1475	3800	410	14.5	260	10.24	3/8	6.08	13.4	85
OP-915DA	M24~M27	1300	958	2000	1475	3800	410	14.5	270	10.63	3/8	6.2	13.67	85



**Air Wrench Twin Ring Type**

扳手系列:雙環式



- High torque
- Long lasting
- Less vibration than single ring type

**APPLICATION :**

- Especially in heavy-productive industries rattan, motor.

- 扭力大
- 壽命長
- 震動力較單環式小

**用途 :**

- 適用於汽機車、組立廠



**OP-W17-D1A** 1/2"  
**OP-W17-D1B** 3/8"

Rear exhaust  
後排氣



**OP-W19-D1A** 3/8"  
**OP-W19-D1B** 1/2"

Handle exhaust  
下排氣

**SPECIFICATION(air pressure at 90psi、6.2bar、6.3kg/cm<sup>2</sup>)**

MODEL 型號	Bolt Size Capacity 螺栓規格	Working Torque 工作扭力		MAX. Torque 最大扭力		Free Speed 無負荷轉速	Air Consumption 耗氣量		Overall Length 全長		Air Inlet 入氣接頭	Net Weight 重量		Sound Level 噪音值
		Nm	ft-lb	Nm	ft-lb		rpm	l/min	cfm	mm		inch	P.T	
OP-W17-D1A	M12	120	86	200	148	8100	226	8	220	8.66	1/4	1.32	2.91	85
OP-W17-D1B	M12	120	86	200	148	8100	226	8	220	8.66	1/4	1.32	2.91	85
OP-W19-D1A	M12	120	86	270	200	8500	254	9	155	6.1	1/4	1.32	2.91	88
OP-W19-D1B	M12	120	86	270	200	8500	254	9	155	6.1	1/4	1.32	2.91	88



**Air Wrench Twin Ring Type**

**氣動扳手:雙環式**



Outside trigger  
外板機

Inside trigger  
內板機



**OP-912D2 3/4"**  
Side exhaust  
側排氣

- Outside trigger : OP-912D2 with driver anvil length 1/2"  
OP-912D4 with driver anvil length 2-1/4"
- Inside trigger : OP-912DZ2 with driver anvil length 1/2"  
OP-912DZ4 with driver anvil length 2-1/4"
- 外板機 : OP-912D2輸出軸長為1/2"  
OP-912D4輸出軸長為2-1/4"
- 內板機 : OP-912DZ2輸出軸長為1/2"  
OP-912DZ4輸出軸長為2-1/4"



**OP-913D2 1"**  
Side exhaust  
Light type  
側排氣  
輕量型



- Outside trigger : OP-913D2 with driver anvil length 1/2"  
OP-913D6 with driver anvil length 6-1/2"  
OP-913D8 with driver anvil length 8-1/2"
- Inside trigger : OP-913DZ2 with driver anvil length 1/2"  
OP-913DZ6 with driver anvil length 6-1/2"  
OP-913DZ8 with driver anvil length 8-1/2"
- 外板機 : OP-913D2輸出軸長為1/2"  
OP-913D6輸出軸長為6-1/2"  
OP-913D8輸出軸長為8-1/2"
- 內板機 : OP-913DZ2輸出軸長為1/2"  
OP-913DZ6輸出軸長為6-1/2"  
OP-913DZ8輸出軸長為8-1/2"

**SPECIFICATION(air pressure at 90psi \ 6.2bar \ 6.3kg/cm<sup>2</sup>)**

MODEL 型號	Bolt Size Capacity 螺栓規格	Working Torque 工作扭力		MAX. Torque 最大扭力		Free Speed 無負荷轉速	Air Consumption 耗氣量		Overall Length 全長		Air Inlet 入氣接頭	Net Weight 重量		Sound Level 噪音值
		mm	Nm	ft-lb	Nm		ft-lb	rpm	l/min	cfm		mm	inch	
OP-912D2	M22~M24	900	664	1000 ~1300	730 ~950	4300	424	15	348	13.7	3/8	5.1	11.24	102
OP-912D4	M22~M24	900	664	1000 ~1300	730 ~950	4300	424	15	393	15.47	3/8	5.25	11.57	102
OP-912DZ2	M22~M24	900	664	1000 ~1300	730 ~950	4300	424	15	348	13.7	3/8	5.1	11.24	102
OP-912DZ4	M22~M24	900	664	1000 ~1300	730 ~950	4300	424	15	393	15.47	3/8	5.25	11.57	102
OP-913D2	M27	1400	1032	1800 ~2000	1320 ~1470	4000	424	15	350	13.78	3/8	6.6	14.55	102
OP-913D6	M27	1400	1032	1800 ~2000	1320 ~1470	4000	424	15	500	19.69	3/8	7.4	16.31	102
OP-913D8	M27	1400	1032	1800 ~2000	1320 ~1470	4000	424	15	550	21.65	3/8	7.8	17.2	102
OP-913DZ2	M27	1400	1032	1800 ~2000	1320 ~1470	4000	424	15	350	13.78	3/8	6.6	14.55	102
OP-913DZ6	M27	1400	1032	1800 ~2000	1320 ~1470	4000	424	15	500	19.69	3/8	7.4	16.31	102
OP-913DZ8	M27	1400	1032	1800 ~2000	1320 ~1470	4000	424	15	550	21.65	3/8	7.8	17.2	102



## Air Wrench Twin Ring Type

### 氣動扳手:雙環式

Outside trigger  
外板機

Inside trigger  
內板機



**OP-914D2 1"**  
Side exhaust  
側排氣



- Outside trigger : OP-914D2 with driver anvil length 1/2"  
OP-914D6 with driver anvil length 6-1/2"  
OP-914D8 with driver anvil length 8-1/2"
- Inside trigger : OP-914DZ2 with driver anvil length 1/2"  
OP-914DZ6 with driver anvil length 6-1/2"  
OP-914DZ8 with driver anvil length 8-1/2"
- 外板機 : OP-914D2輸出軸長為1/2"  
OP-914D6輸出軸長為6-1/2"  
OP-914D8輸出軸長為8-1/2"
- 內板機 : OP-914DZ2輸出軸長為1/2"  
OP-914DZ6輸出軸長為6-1/2"  
OP-914DZ8輸出軸長為8-1/2"



**OP-914DA3 1-1/2"**  
Side exhaust  
側排氣



- Outside trigger : OP-914DA3 with driver anvil length 1/2"  
OP-914DA6 with driver anvil length 6"
- Inside trigger : OP-914DAZ3 with driver anvil length 1/2"  
OP-914DAZ6 with driver anvil length 6"
- 外板機 : OP-914DA3輸出軸長為1/2"  
OP-914DA6輸出軸長為6"
- 內板機 : OP-914DAZ3輸出軸長為1/2"  
OP-914DAZ6輸出軸長為6"

### SPECIFICATION (air pressure at 90psi \ 6.2bar \ 6.3kg/cm<sup>2</sup>)

MODEL 型號	Bolt Size Capacity 螺栓規格	Working Torque 工作扭力		MAX. Torque 最大扭力		Free Speed 無負荷轉速	Air Consumption 耗氣量		Overall Length 全長		Air Inlet 入氣接頭	Net Weight 重量		Sound Level 噪音值
		Nm	ft-lb	Nm	ft-lb		rpm	l/min	cfm	mm		inch	P.T	
OP-914D2	M30	2000	1475	2500 ~2900	1840 ~2130	2800	452	16	393	15.47	3/8	10.3	22.71	100
OP-914D6	M30	2000	1475	2500 ~2800	1840 ~2060	2800	452	16	543	21.38	3/8	12.3	27.12	100
OP-914D8	M30	2000	1475	2500 ~2800	1840 ~2060	2800	452	16	594	23.39	3/8	13.3	29.3	100
OP-914DZ2	M30	2000	1475	2500 ~2900	1840 ~2130	2800	452	16	393	15.47	3/8	10.3	22.71	100
OP-914DZ6	M30	2000	1475	2500 ~2800	1840 ~2060	2800	452	16	543	21.38	3/8	12.3	27.12	100
OP-914DZ8	M30	2000	1475	2500 ~2800	1840 ~2060	2800	452	16	594	23.39	3/8	13.3	29.3	100
OP-914DA3	M30	2000	1475	2700 ~3000	1990 ~2210	2800	452	16	418	16.46	3/8	11.54	25.44	100
OP-914DAZ3	M30	2000	1475	2700 ~3000	1990 ~2210	2800	452	16	418	16.46	3/8	11.54	25.44	100
OP-914DA6	M30	2000	1475	2700 ~3000	1990 ~2210	2800	452	16	543	21.38	3/8	13.26	29.23	100
OP-914DAZ6	M30	2000	1475	2700 ~3000	1990 ~2210	2800	452	16	543	21.38	3/8	13.26	29.23	100

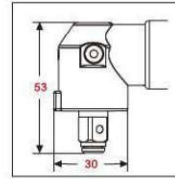


**Air Wrench Ball Bearing Hitter Type**

氣動扳手:鋼珠打擊式



**OP-808LH3 3/8"**  
Rear exhaust with muffler  
後排氣低噪音



UNIT : (mm)

**SPECIFICATION (air pressure at 90psi、6.2bar、6.3kg/cm<sup>2</sup>)**

MODEL 型號	Bolt Size Capacity 螺栓規格	Working Torque 工作扭力		MAX. Torque 最大扭力		Free Speed 無負荷轉速	Air Consumption 耗氣量		Overall Length 全長		Air Inlet 入氣接頭	Net Weight 重量		Sound Level 噪音值
		Nm	ft-lb	Nm	ft-lb		l/min	cfm	mm	inch		kg	lb	
OP-808LH3	M6	10	7	25	18.5	2200	127	4.5	560	22	1/4	2.3	5.07	73

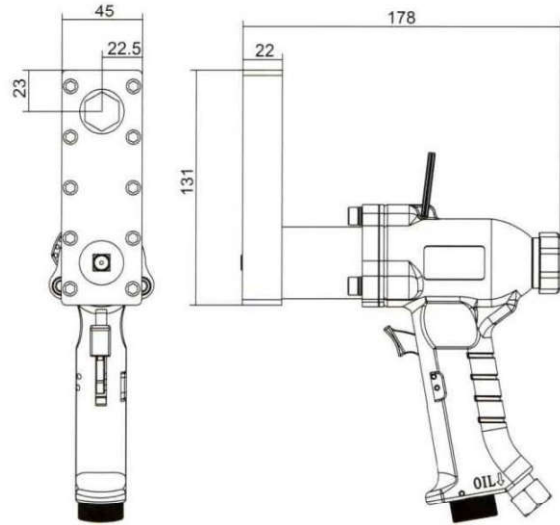
## Professional Tools 專業級

### Air Gear Wrench

#### 氣動齒輪扳手



OP-309LRW  
Side Exhaust  
後排氣



- 齒輪扳手主要功能，能解決其他氣動工具無法探入極小空間、鎖緊螺絲或螺帽之特殊工具。

The gear wrench can be used in narrow working spaces and can fasten bolts and nuts easily. This special tool can be reached right place that other air tools can not.

- 結構：雙錘齒輪式

Structure: Two hammer with gear type

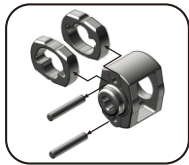
- 優點：扭力大

Advantage: Large torque

MODEL 型號	OP-309LRW
Hex Size 六角尺寸	Order Code 訂貨號
10mm	OP-309LRW-10
11mm	OP-309LRW-11
12mm	OP-309LRW-12
13mm	OP-309LRW-13
14mm	OP-309LRW-14
15mm	OP-309LRW-15
17mm	OP-309LRW-17
19mm	OP-309LRW-19

#### SPECIFICATION (air pressure at 90psi、6.2bar、6.3kg/cm<sup>2</sup>)

MODEL 型號	Hex Size 六角尺寸	Working Torque 工作扭力		MAX. Torque 最大扭力		Free Speed 無負荷轉速	Air Consumption 耗氣量		Overall Length 全長		Air Inlet 入氣接頭		Net Weight 重量		Sound Level 噪音值
		Nm	ft-lb	Nm	ft-lb		l/min	cfm	mm	inch	P.T	kg	lb	dB(A)	
OP-309LRW	10, 11, 12, 13, 14, 15, 17, 19	55	40	180	135	7000	198	7	178	7	1/4	2.24	4.93	90	



**Air Wrench Auto Repair (Twin Hammer)**

氣動扳手：汽修級(雙環式)



**OP-W1095D4 1/2"**  
**OP-W1095D3 3/8"**  
Composite handle  
Handle exhaust  
複合材料扳手  
下排氣



**OP-W1064D3 3/8"**  
Composite handle  
Handle exhaust  
複合材料扳手  
下排氣



**OP-W1015D4 1/2"**  
Composite handle  
Handle exhaust  
複合材料扳手  
下排氣



**OP-W1015D4-2 1/2"**  
Composite handle  
Handle exhaust  
複合材料扳手  
下排氣



**OP-W1077D6 3/4"**  
Composite handle  
Handle exhaust  
複合材料扳手  
下排氣



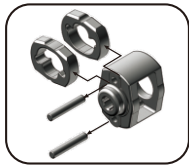
**OP-W1077D6-3 3/4"**  
Composite handle  
Handle exhaust  
複合材料扳手  
下排氣



**OP-W1077D6-6 3/4"**  
Composite handle  
Handle exhaust  
複合材料扳手  
下排氣

**SPECIFICATION(air pressure at 90psi、6.2bar、6.3kg/cm<sup>2</sup>)**

MODEL 型號	Working Torque 工作扭力		Bolt Size Capacity 螺帽攻拆尺寸	MAX. Torque 最大扭力		Free Speed 無負荷轉速	Air Consumption 耗氣量		Overall Length 全長		Air Inlet 入氣接頭	Net Weight 重量		Sound Level 噪音值
	Nm	ft-lb	mm	Nm	ft-lb	rpm	l/min	cfm	mm	inch	P.T	kg	lb	dB(A)
OP-W1095D4	480	353	M17	550	405	10000	340	12	125	4.42	1/4	1.24	2.5	100
OP-W1095D3	480	353	M15	550	405	10000	340	12	125	4.42	1/4	1.24	2.5	100
OP-W1064D3	480	353	M15	550	405	8000	396	14	160	6.20	1/4	1.3	2.8	92
OP-W1015D4	750	552	M21	900	662	8500	452	16	190	7.48	1/4	2.1	4.6	95
OP-W1015D4-2	750	552	M21	900	662	8500	452	16	241	9.49	1/4	2.2	4.8	95
OP-W1077D6	1500	1103	M25	2000	1474	5500	538	19	220	8.66	3/8	3.7	8.1	91
OP-W1077D6-3	1500	1103	M25	2000	1474	5500	538	19	296	11.65	3/8	4.0	8.8	91
OP-W1077D6-6	1500	1103	M25	2000	1474	5500	538	19	373	14.68	3/8	4.3	10.3	91



**Air Wrench Auto Repair (Twin Hammer)**

**氣動扳手：汽修級(雙環式)**



**OP-W1200D8 1"**  
Composite handle  
Handle exhaust  
複合材料扳手  
下排氣



**OP-W1200D8-6 1"**  
Composite handle  
Handle exhaust  
複合材料扳手  
下排氣



**OP-W1201D8 1"**  
Magnesium Front Casing 鎂合金前套  
Composite handle 複合材料把手  
Side exhaust 側排氣



**OP-W1201D8-6 1"**  
Magnesium Front Casing 鎂合金前套  
Composite handle 複合材料把手  
Side exhaust 側排氣



**OP-W1038D8 1"**  
Full aluminum body  
Side exhaust  
鋁合金材質  
側排氣



**OP-W1038D8-6 1"**  
Full aluminum body  
Side exhaust  
鋁合金材質  
側排氣

**SPECIFICATION(air pressure at 90psi、6.2bar、6.3kg/cm<sup>2</sup>)**

MODEL 型號	Working Torque 工作扭力		Bolt Size Capacity 螺帽攻拆尺寸	MAX. Torque 最大扭力		Free Speed 無負荷轉速	Air Consumption 耗氣量		Overall Length 全長		Air Inlet 入氣接頭	Net Weight 重量		Sound Level 噪音值
	Nm	ft-lb		Nm	ft-lb		l/min	cfm	mm	inch		P.T	kg	
<b>OP-W1200D8</b>	2430	1800	M30	2700	2000	5500	550	20	256	10	1/2	5.9	13	97
<b>OP-W1200D8-6</b>	2430	1800	M30	2700	2000	5500	550	20	417	16.4	1/2	6.8	15	97
<b>OP-W1201D8</b>	2000	1450	M30	2560	1900	5500	550	20	425	16.73	1/2	6.2	13.64	102
<b>OP-W1201D8-6</b>	2000	1450	M30	2560	1900	5500	550	20	580	22.83	1/2	7.2	15.84	102
<b>OP-W1038D8</b>	2560	1900	M33	3240	2400	3600	650	23	398	15.66	1/2	10.5	23.6	97
<b>OP-W1038D8-6</b>	2560	1900	M33	3240	2400	3600	650	23	550	21.65	1/2	11.7	25.8	97



### Air Wrench Auto Repair (Twin Hammer)

氣動扳手：汽修級（雙環式）

重量輕、高扭力  
Light Weight, High Torque Power



OP-W1097D4 1/2"  
Handle exhaust  
下排氣



OP-W2201D4 1/2"  
Handle exhaust  
下排氣

SPECIFICATION (air pressure at 90psi、6.2bar、6.3kg/cm<sup>2</sup>)

MODEL 型號	Working Torque 工作扭力		MAX. Torque 最大扭力		Free Speed 無負荷轉速	Air Consumption 耗氣量		Overall Length 全長		Air Inlet 入氣接頭	Net Weight 重量		Sound Level 噪音值
	Nm	ft-lb	Nm	ft-lb	rpm	l/min	cfm	mm	inch	P.T	kg	lb	dB(A)
OP-W1097D4	743	550	891	660	9500	340	12	190	7.48	1/4	2.3	5.13	95
OP-W2201D4	600	445	750	555	8000	420	15	155	6.01	1/4	1.78	3.9	91



### Air Wrench Without Pin Type

氣動扳手：無銷式



OP-916P2 1"  
OP-916PA2 1-1/2"  
Side exhaust  
側排氣

- Outside trigger : OP-916P2 with driver anvil length 1/2"  
OP-916P8 with driver anvil length 8-1/2"  
OP-916PA2 with driver anvil length 1/2"  
OP-916PA6 with driver anvil length 6"
- Inside trigger : OP-916PZ2 with driver anvil length 1/2"  
OP-916PZ8 with driver anvil length 8-1/2"  
OP-916PAZ2 with driver anvil length 1/2"  
OP-916PAZ6 with driver anvil length 6"
- 外板機 : OP-916P2輸出軸長為1/2"  
OP-916P8輸出軸長為8-1/2"  
OP-916PA2輸出軸長為1/2"  
OP-916PA6輸出軸長為6"
- 內板機 : OP-916PZ2輸出軸長為1/2"  
OP-916PZ8輸出軸長為8-1/2"  
OP-916PAZ2輸出軸長為1/2"  
OP-916PAZ6輸出軸長為6"

SPECIFICATION (air pressure at 90psi、6.2bar、6.3kg/cm<sup>2</sup>)

MODEL 型號	Bolt Size 螺帽攻拆尺寸	MAX. Torque 最大扭力		Free Speed 無負荷轉速	Air Consumption 耗氣量		Overall Length 全長		Air Inlet 入氣接頭	Net Weight 重量		Sound Level 噪音值
	mm	Nm	ft-lb	rpm	l/min	cfm	mm	inch	P.T	kg	lb	dB(A)
OP-916P2	M36	3800	2800	4000	620	22	430	16.9	1/2	14.4	31.6	100
OP-916PZ2	M36	3800	2800	4000	620	22	430	16.9	1/2	14.4	31.6	100
OP-916P8	M36	3600	2650	4000	620	22	610	24	1/2	16.2	35.6	100
OP-916PZ8	M36	3600	2650	4000	620	22	610	24	1/2	16.2	35.6	100
OP-916PA2	M36	3800	2800	4000	620	22	430	16.9	1/2	14.8	32.5	100
OP-916PAZ2	M36	3800	2800	4000	620	22	430	16.9	1/2	14.8	32.5	100
OP-916PA6	M36	3600	2650	4000	620	22	550	21.7	1/2	16.6	36.6	100
OP-916PAZ6	M36	3600	2650	4000	620	22	550	21.7	1/2	16.6	36.6	100